

600 COREY CREEK LANE, SOUTHOLD

**Brown
Harris
Stevens**

Interior:

Unfinished Lower Level: 1,153± sq. ft.

First Floor: 1,173± sq. ft.

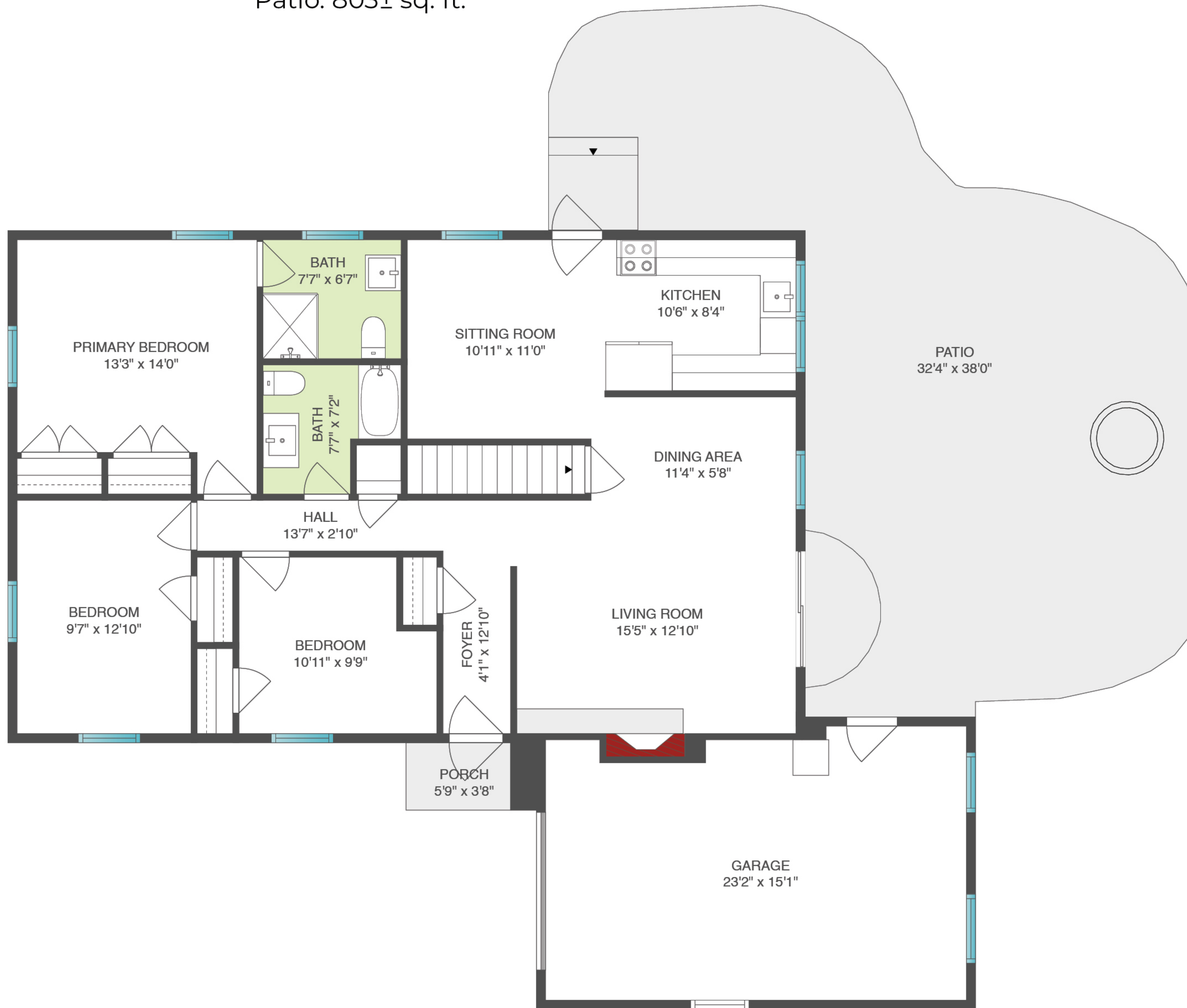
Total: 1,173± sq. ft.

Exterior:

Porch: 21± sq. ft.

Garage: 333± sq. ft.

Patio: 803± sq. ft.



FIRST FLOOR

Scale in feet. Dimensions are approximate. All information contained herein is gathered from sources we believe to be reliable.

However, we cannot guarantee its accuracy and interested persons should rely on their own enquiries

600 COREY CREEK LANE, SOUTHOLD



Interior:
Unfinished Lower Level: 1,153± sq. ft.
First Floor: 1,173± sq. ft.
Total: 1,173± sq. ft.

Exterior:
Porch: 21± sq. ft.
Garage: 333± sq. ft.
Patio: 803± sq. ft.



UNFINISHED BASEMENT
41'11" x 27'6"

LOWER LEVEL

Scale in feet. Dimensions are approximate. All information contained herein is gathered from sources we believe to be reliable. However, we cannot guarantee its accuracy and interested persons should rely on their own enquiries

600 COREY CREEK LANE, SOUTHOLD

**Brown
Harris
Stevens**

Interior:

Unfinished Lower Level: 1,153± sq. ft.

First Floor: 1,173± sq. ft.

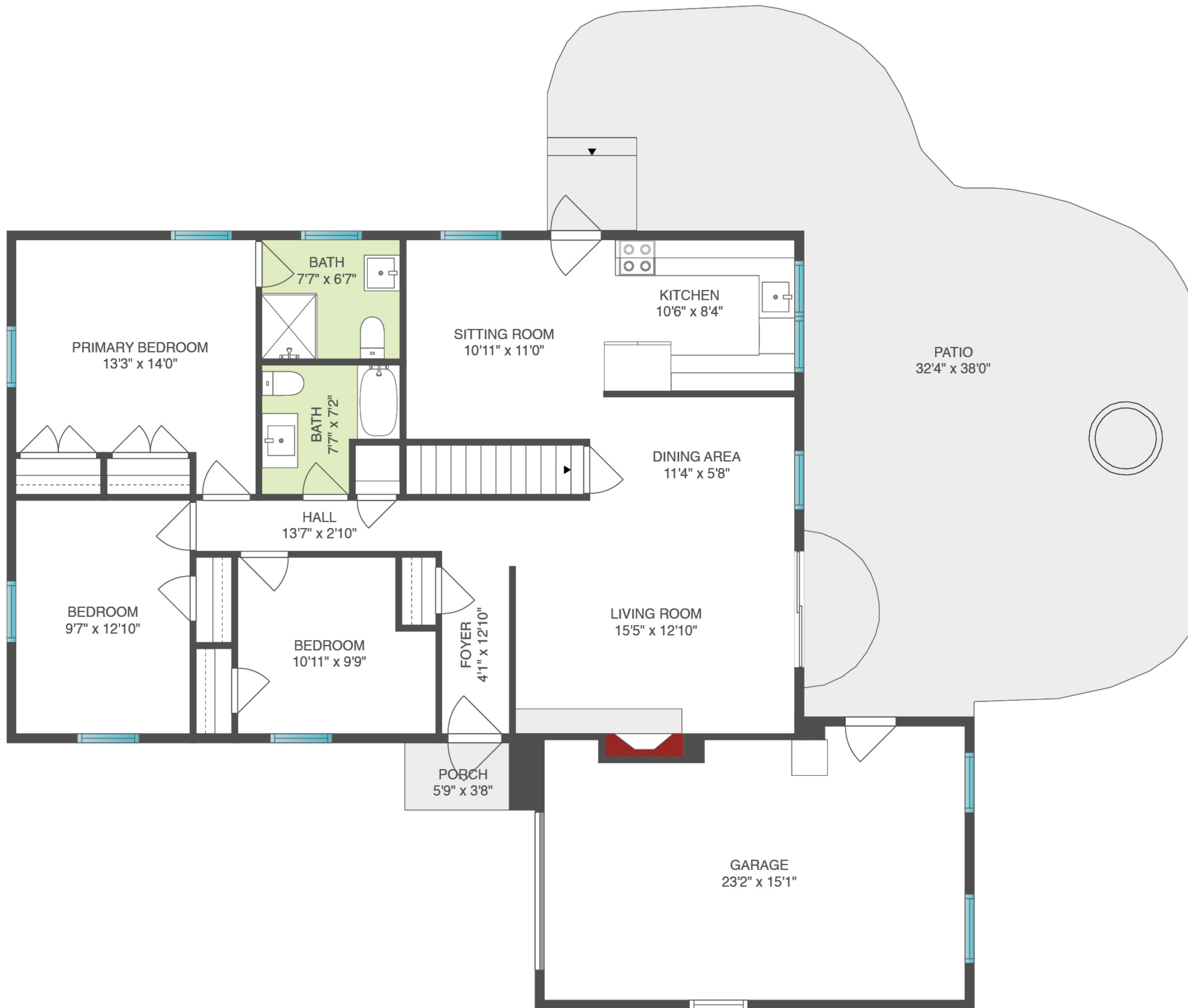
Total: 1,173± sq. ft.

Exterior:

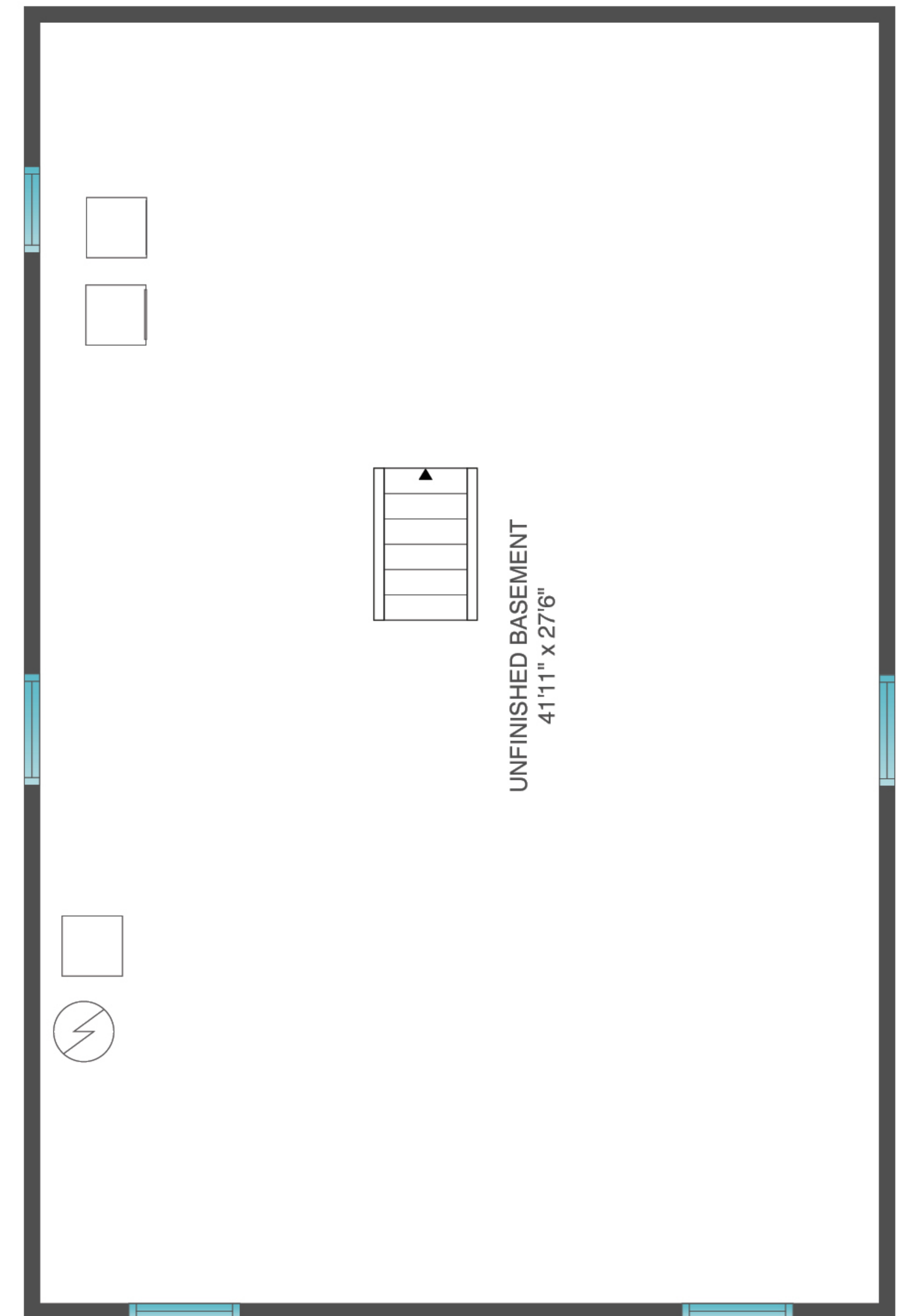
Porch: 21± sq. ft.

Garage: 333± sq. ft.

Patio: 803± sq. ft.



FIRST FLOOR



LOWER LEVEL

Scale in feet. Dimensions are approximate. All information contained herein is gathered from sources we believe to be reliable.

However, we cannot guarantee its accuracy and interested persons should rely on their own enquiries