



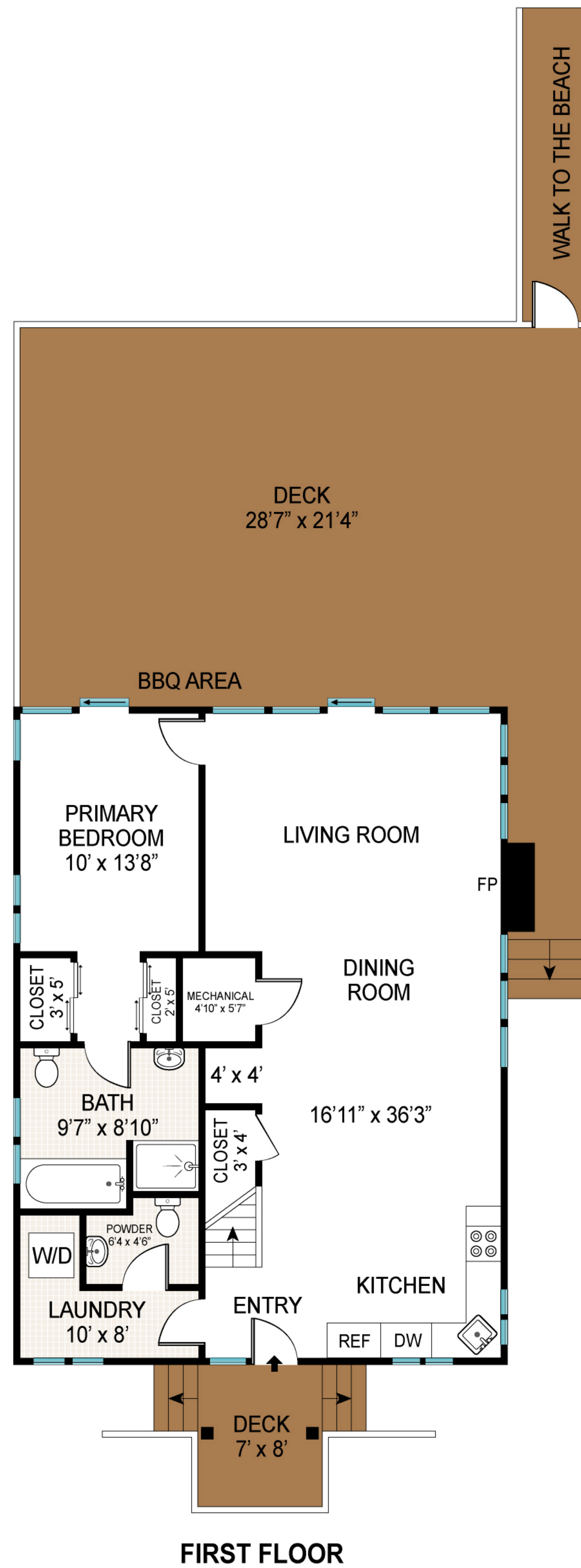
FIRST FLOOR INT: 932 ft²
 FIRST FLOOR OUT: 742 ft²
 BASEMENT: 971 ft²
 SECOND FLOOR INT: 964 ft²
 SECOND FLOOR OUT: 97 ft²
 THIRD FLOOR INT: 266 ft²
 TOTAL INT: 3133 ft²
 TOTAL OUT: 839 ft²
 TOTAL: 3972 ft²



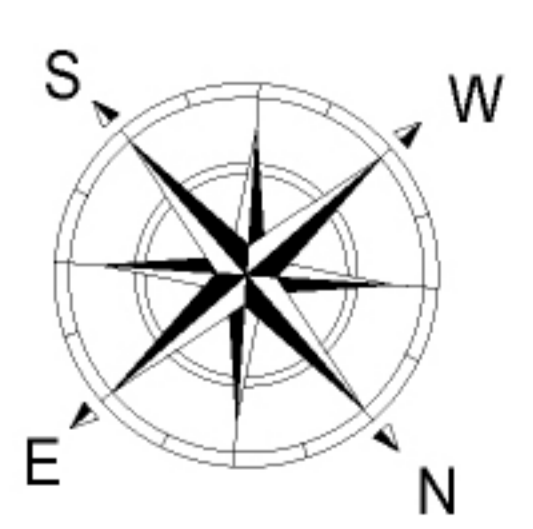
Scale in feet. Indicative only. Dimensions are approximate. All information contained herein is gathered from sources we believe to be reliable. However, we cannot guarantee its accuracy and interested persons should rely on their own inquiries.

789 Dune Road, Westhampton

**Brown
Harris
Stevens**



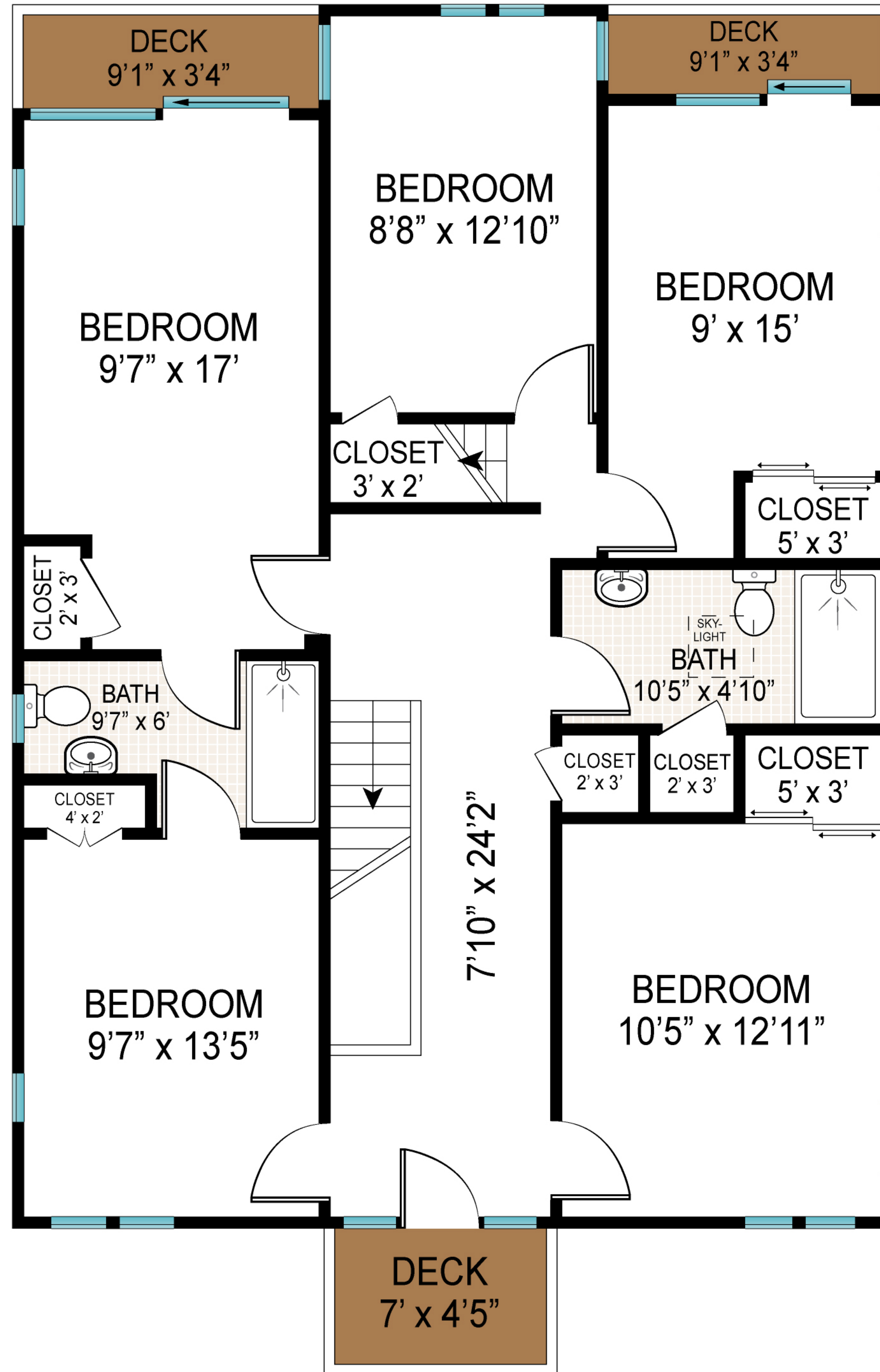
FIRST FLOOR INT: 932 ft²
 FIRST FLOOR OUT: 742 ft²



Scale in feet. Indicative only. Dimensions are approximate. All information contained herein is gathered from sources we believe to be reliable. However, we cannot guarantee its accuracy and interested persons should rely on their own inquiries.

789 Dune Road, Westhampton

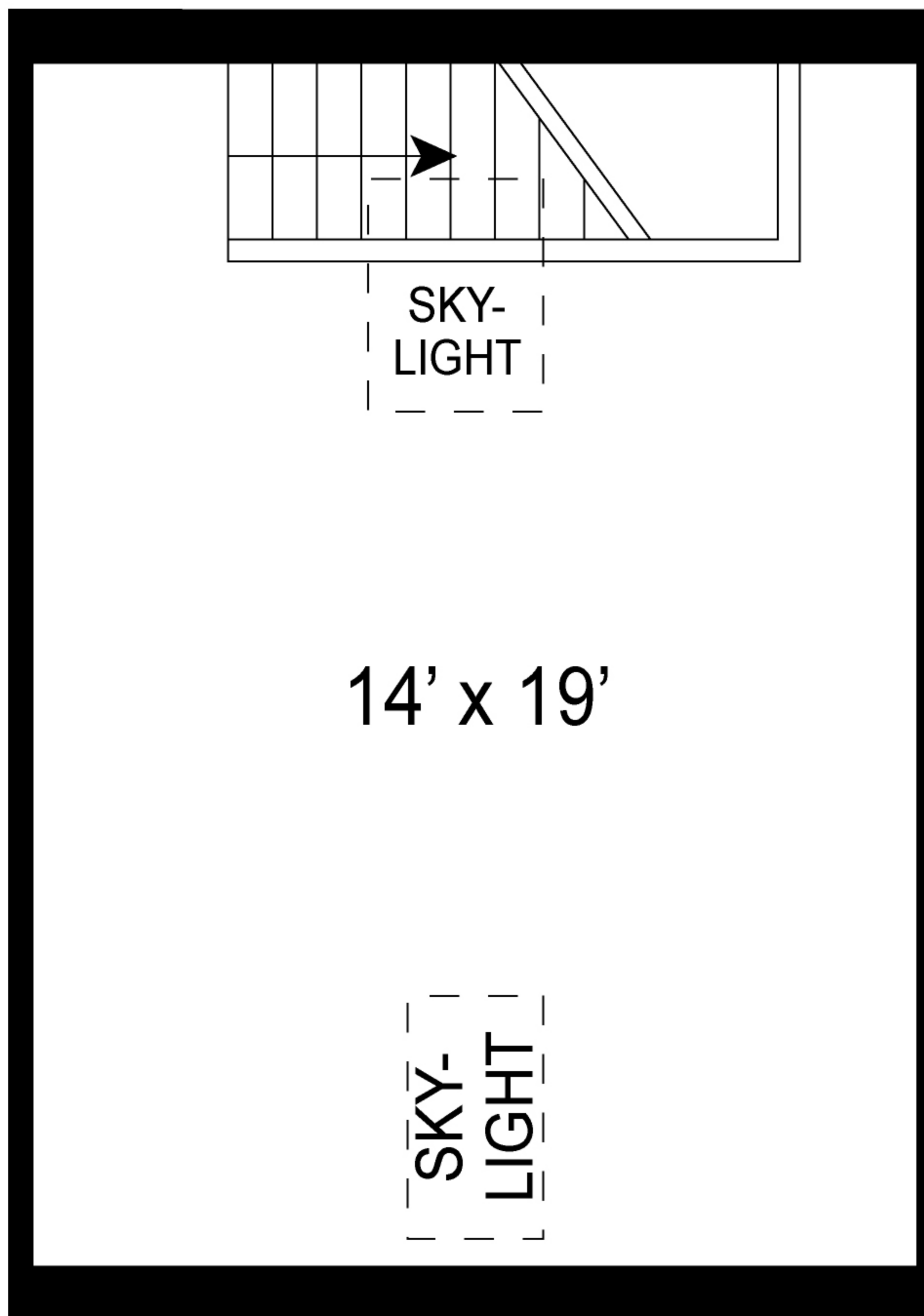




SECOND FLOOR

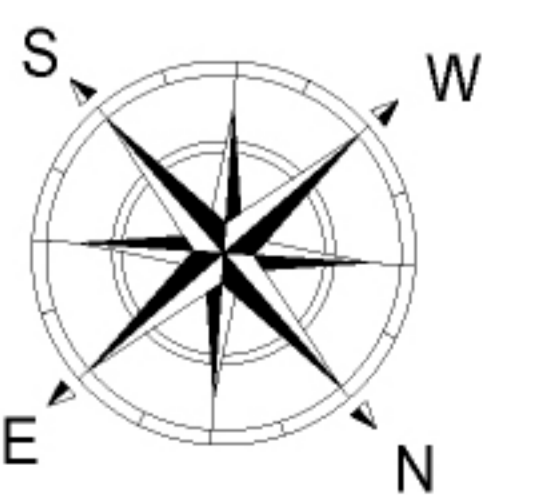
SECOND FLOOR INT: 964 ft²
 SECOND FLOOR OUT: 97 ft²

Scale in feet. Indicative only. Dimensions are approximate. All information contained herein is gathered from sources we believe to be reliable. However, we cannot guarantee its accuracy and interested persons should rely on their own inquiries .

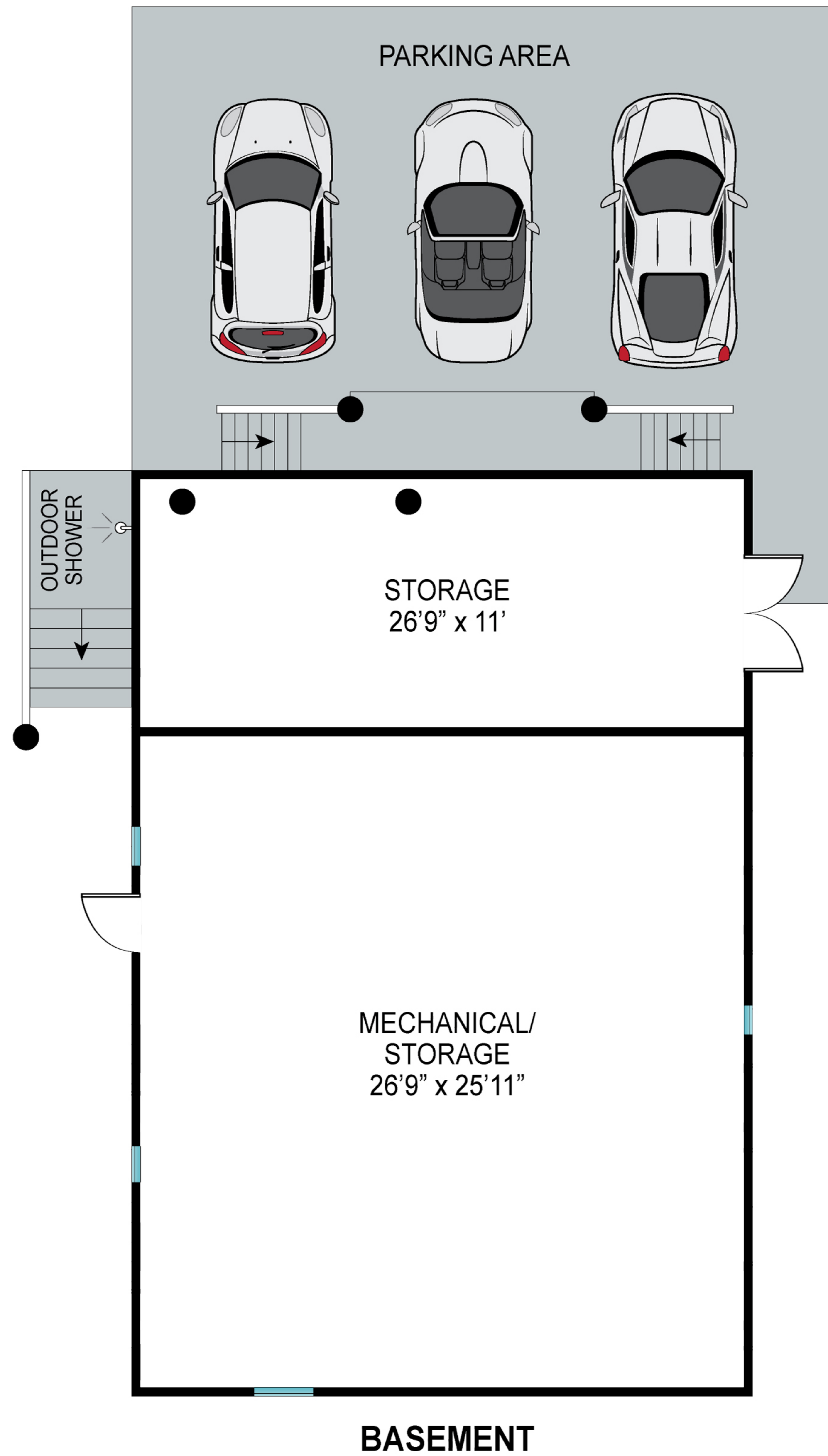


THIRD FLOOR

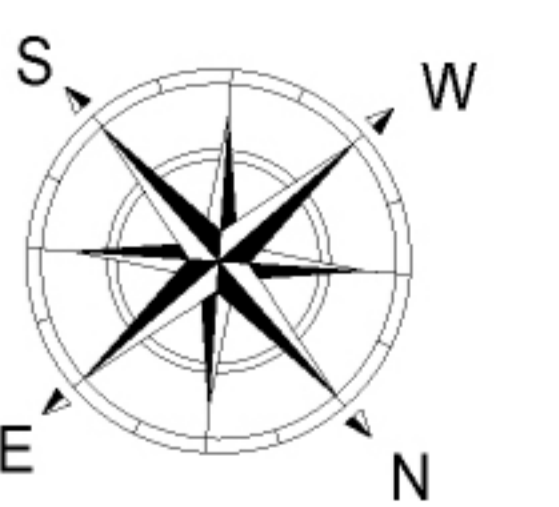
THIRD FLOOR INT: 266 ft²



Scale in feet. Indicative only. Dimensions are approximate. All information contained herein is gathered from sources we believe to be reliable. However, we cannot guarantee its accuracy and interested persons should rely on their own inquiries.



BASEMENT: 971 ft²



Scale in feet. Indicative only. Dimensions are approximate. All information contained herein is gathered from sources we believe to be reliable. However, we cannot guarantee its accuracy and interested persons should rely on their own inquiries.

789 Dune Road, Westhampton

**Brown
Harris
Stevens**