



FIRST FLOOR INT: 1900 ft ²	BASEMENT INT: 1259 ft ²
FIRST FLOOR OUT: 1000 ft ²	BASEMENT OUT: 300 ft ²
SECOND FLOOR INT: 1700 ft ²	TOTAL INT: 4859 ft ²
SECOND FLOOR OUT: 233 ft ²	TOTAL OUT: 1533 ft ²
	TOTAL: 6733 ft ²

Scale in feet. Indicative only. Dimensions are approximate. All information contained herein is gathered from sources we believe to be reliable. However, we cannot guarantee its accuracy and interested persons should rely on their own inquiries.

134 Corwith Avenue, Bridgehampton





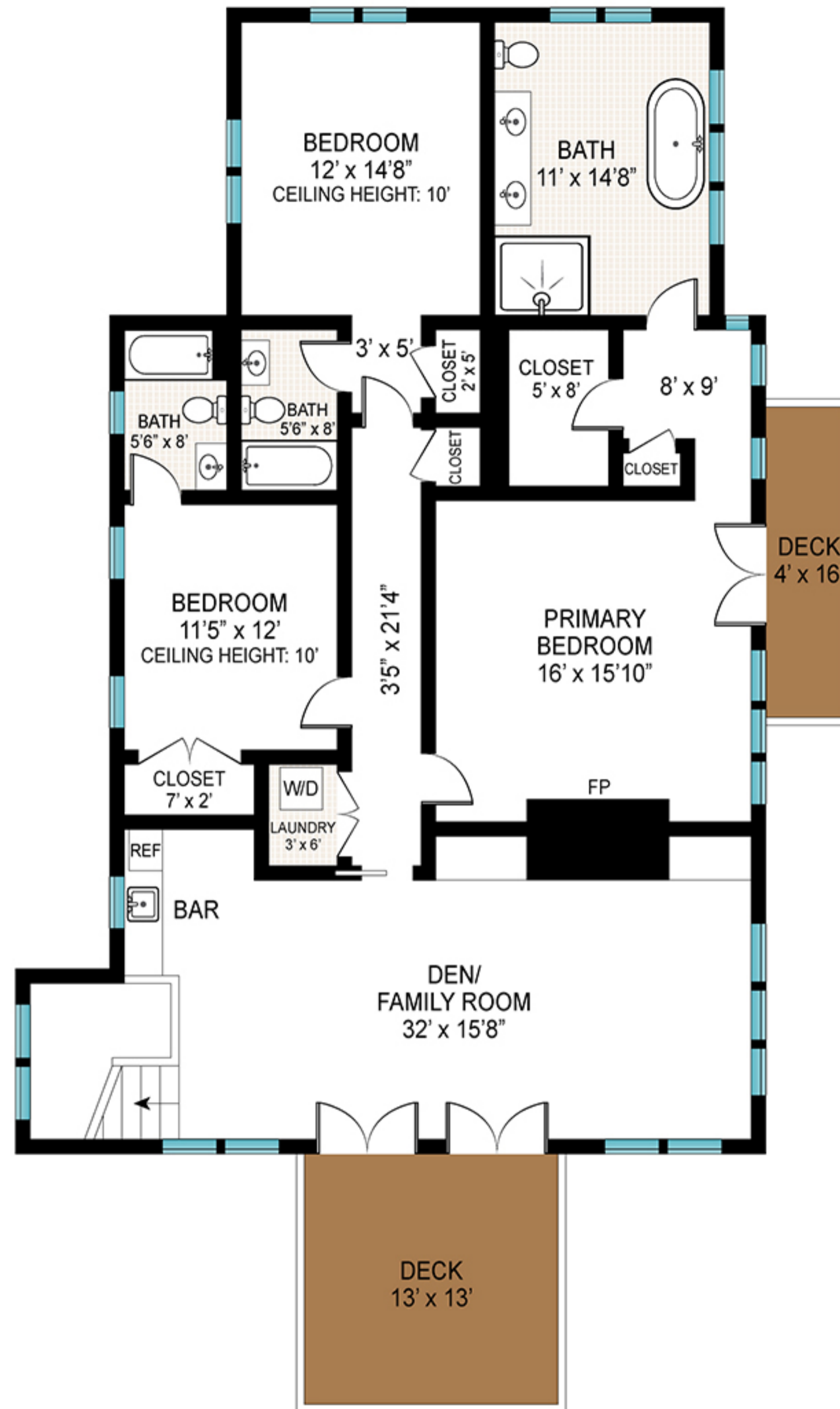
FIRST FLOOR
 CEILING HEIGHT: 9'

FIRST FLOOR INT: 1900 ft²
 FIRST FLOOR OUT: 1000 ft²

Scale in feet. Indicative only. Dimensions are approximate. All information contained herein is gathered from sources we believe to be reliable. However, we cannot guarantee its accuracy and interested persons should rely on their own inquiries.

134 Corwith Avenue, Bridgehampton





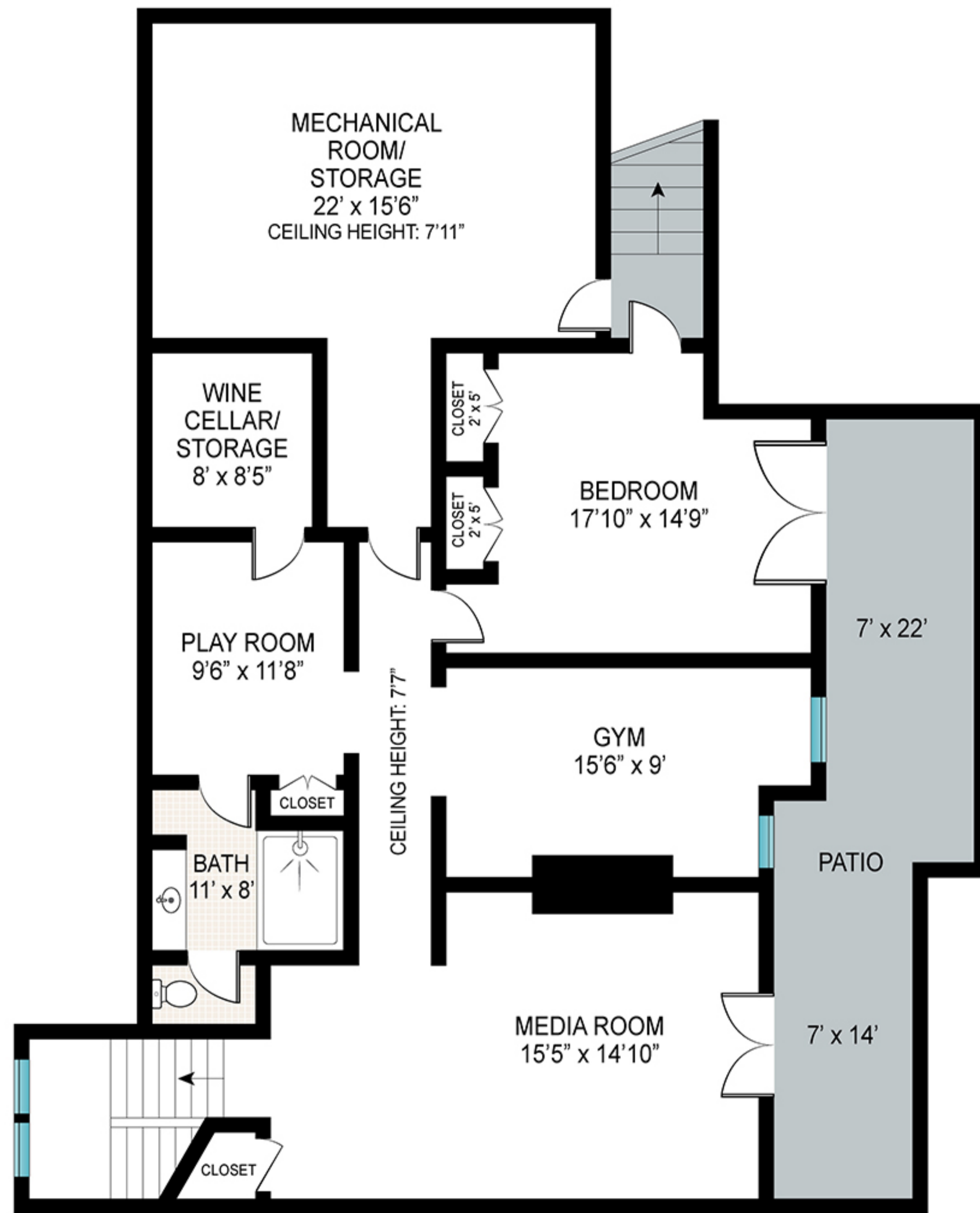
SECOND FLOOR
CEILING HEIGHT: 9'11"

SECOND FLOOR INT: 1700 ft²
SECOND FLOOR OUT: 233 ft²

Scale in feet. Indicative only. Dimensions are approximate. All information contained herein is gathered from sources we believe to be reliable. However, we cannot guarantee its accuracy and interested persons should rely on their own inquiries.

134 Corwith Avenue, Bridgehampton





BASEMENT
CEILING HEIGHT: 8'10"

BASEMENT INT: 1259 ft²
BASEMENT OUT: 300 ft²

Scale in feet. Indicative only. Dimensions are approximate. All information contained herein is gathered from sources we believe to be reliable. However, we cannot guarantee its accuracy and interested persons should rely on their own inquiries.

134 Corwith Avenue, Bridgehampton

